

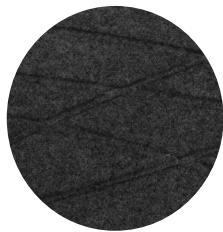
TuffComfort™ Standing Desk Mats

Anti-Fatigue Mats • Indoor

TuffComfort standing desk mats provide workers with a comfortable, healthy alternative to sitting throughout their workday, minimizing the negative effects on the body associated with sitting for long periods of time.



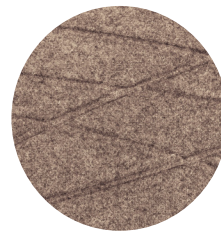
- **Comfortable** – Polyurethane cushion runs edge-to-edge and provides excellent anti-fatigue properties to alleviate pain from extended standing; overall mat thickness is ¾"
- **Durable** – PET fabric surface is permanently bonded to a durable rubber layer that makes the mat resistant to punctures from high heels
- **Safe** – Features beveled edges, providing a seamless transition from floor to mat; edges will not crack or curl
- **Stain Resistant** – PET fabric is naturally stain resistant, making it easy to remove stains from the mat
- **Eco-Friendly** – The PET fabric surface is made from at least 90% recycled content



Coal Black



Granite Grey



Sand

Colors may vary due to inconsistencies of various display monitors or printers (if you're viewing a printed version of this document). Color images are intended to be used as a guide only.

TuffComfort™ Standing Desk Mats

Anti-Fatigue Mats • Indoor



Product No. 5230

Size (in.)	Product Weight
21.75" x 31.75"	5 lbs.

Please note, mat size is approximate as rubber shrinks and expands in conjunction with temperature and time. Tolerable manufacturing size variance is 3-5%.